

# MOBIUS

## Annual Report

### Annual Report FY 2011-2012

#### TRAINING

MOBIUS continued to travel to our member libraries for onsite training. This past year we were awarded an LSTA grant for a mobile laptop lab for use in training. A total of 24 sessions were held this past year, many of them one-on-one trainings for new staff. We trained staff on circulation, acquisitions, cataloging, create lists, global update, record loads, serials and site coordinators.

FY12 was another exciting year at MOBIUS! Our organization is steadily growing and expanding, bringing new services and challenges. This past year, we started new projects, implemented new technologies, said hello to new staff, and increased our presence in Missouri.

One of our most exciting new projects is Missouri Evergreen. MOBIUS signed a contract with the Missouri State Library to host and manage an Evergreen open source ILS for the public libraries of Missouri. Thirteen public libraries have signed on as the 1st wave of libraries to migrate creating an informal consortium with an Executive Committee. The Missouri State Library is funding Missouri Evergreen which includes all migration costs, equipment, and two staff that are MOBIUS employees. After signing the six month contract on March 1, 2012, MOBIUS completed preliminary work purchasing servers, installing Evergreen, and working with the libraries to prepare a migration plan as well as policies and procedures. There is a lot of conversation in the public library community about Missouri Evergreen and we can only hope that membership grows, increasing resource sharing across the state.

In October, 2011, MOBIUS signed a contract with Innovative Interfaces to migrate all Millennium servers to their new platform,

Sierra. Migrations are scheduled for February, 2013. We are excited by this new platform which is built on PostgreSQL database technology. Sierra will unify and streamline library workflows and facilitate query and reporting activities with a new open architecture design. We are looking forward to the possibilities of having a more open and robust system.

This year MOBIUS virtualized all of our Millennium servers at a commercial data center in Columbia. This was a huge project that took most of the year. Virtualization means we will no longer be purchasing new servers or paying for migrations each year. It provided us with redundancy and enables us to finally do network backups instead of using traditional tape backups which were problematic and required staff intervention. Virtualization will allow us to easily reconfigure each cluster server whenever needed. Along with this move, the MOBIUS Board of Directors approved a new Systems Administrator position to assist with the management of the Millennium servers, and ultimately our new Sierra system. MOBIUS is the first Innovative site to virtualize the InnReach software.

MOBIUS welcomed four new members in FY12. In November, 2011 Christian County Library and Camden County Library joined as standalone members. Goldfarb School of Nursing and the St. Louis Art Museum went

# MOBIUS

## Annual Report

### Moving Forward

This year MOBIUS offered a webinar series on ebooks called “Moving Forward—Libraries & Ebooks. A total of 395 library staff from libraries and organizations all around the state (and a few out-of-state) attended the series of 13 webinars and a preconference at the Missouri Library Association Conference. The series started off with a session by Joan Frye Williams entitled “Libraries and eBooks: the Future. The second webinar, “Libraries & eBooks: The Balance” dealt with collection development issues and consisted of a panel of librarians from around the state. Jamie LaRue, the Director at Douglas County Library, CO completed the third speaker series by describing his library’s experience creating their own ebook server. The rest of the webinars were one hour sessions held by vendors to showcase their ebook products. Overdrive, 3M, Gale Virtual Reference, Ebsco, Springer, Axis360 by Baker & Taylor, and ebrary all participated.

live as standalone members in August, 2012. All four libraries are lending and borrowing materials through the MOBIUS Union Catalog.

A Strategic Planning Task Force was formed in 2011 and along with input from all of the members, we developed the 2012-2015 MOBIUS Strategic Plan. Many discussions, along with visits by the MOBIUS Executive Director to each of the clusters, were held throughout the year to discuss where the consortium is, where it should go and how it should get there. We are working on some exciting new services and projects and have a very promising future ahead of us.

MOBIUS completed our second audit as a nonprofit organization. Once again we were highly praised by the auditors for spending 95% of our budget on services and programs that directly affect our membership. We have a very low administrative overhead. An accounting firm was hired to assist with our bookkeeping and financial reports. MOBIUS launched the “Accounts Online” feature so that members could view their MOBIUS invoices online.

MOBIUS also experienced some staffing changes this year. We said goodbye to Jessica Hammond, our OPAC Specialist in June, 2012 and welcomed Megan Durham as her replacement. Sharla Lair was hired as MOBIUS’s first Consortial Services & Training Coordinator in March 2012. Sharla is responsible for negotiating and managing electronic resources for our membership and for coordinating training.

Also this year, the WILO Cluster decided to change the name of their cluster to Kansas City to help clarify who they are and where they are located.

MOBIUS received two grants from the Missouri State Library—one for the MOBIUS Annual Conference and one for Vidyo. The conference had another successful year with 331 attendees. Cathy Marshall from Microsoft served as our keynote talking to us about “Social Media, Personal Data, and the Fate of our Digital Legacy”. Vidyo is a desktop videoconferencing software that will allow us to easily provide training, webinars and conduct meetings from a desktop or mobile device. Vidyo was implemented late in the fiscal year and we are still working on implementation.

A few projects were finished this year. Justin Hopkins, MOBIUS Manager, Information Technology, developed a mobile catalog for each of our member libraries’ catalogs. The cluster logos redesign project was completed along with redesigns of each of the clusters and some local catalogs.

The St. Louis Research Libraries Consortium contracted with MOBIUS to redesign their catalog. We were happy to work with them on this project and look forward to other possible projects.

# MOBIUS

## Annual Report

### TRAINING NUMBERS

Training:

184 attendees for Millennium

395 for Ebook Webinar;

Total: 579

We upgraded all Millennium servers to Release 2011 and Encore sites to 4.2. William Woods University and Columbia College canceled their subscriptions to Encore while St. Louis Community College and St. Charles Community College upgraded their Encore subscriptions to Encore Synergy, giving them access to their subscription databases through the catalog. William Woods University subscribed to Ebsco Discovery Service and three more MOBIUS libraries chose Summon as their discovery interface—University of Central Missouri, William Jewel College and Missouri Southern State University.

MOBIUS libraries continue to purchase new Innovative products this year:

Enterprise Backup was “purchased” for each cluster using InnAppreciation Points we received from purchasing Sierra.

Circa Wireless Inventory was purchased using InnAppreciation Points by the QUEST Cluster.

AirPAC & AirPAC for Encore was purchased using InnAppreciation Points by the Archway Cluster.

Bridges, QUEST, and SWAN all purchased genre indexes.

Metropolitan Community College purchased a new scope for their Business & Technology Campus.

Lindenwood University purchased SMS Alerts.

Lindenwood University purchased 2 new licenses.

Stephens College purchased 1 new license.

It was another busy and profitable year for MOBIUS. With our new strategic plan in place, we are ready to move into the future!

# MOBIUS

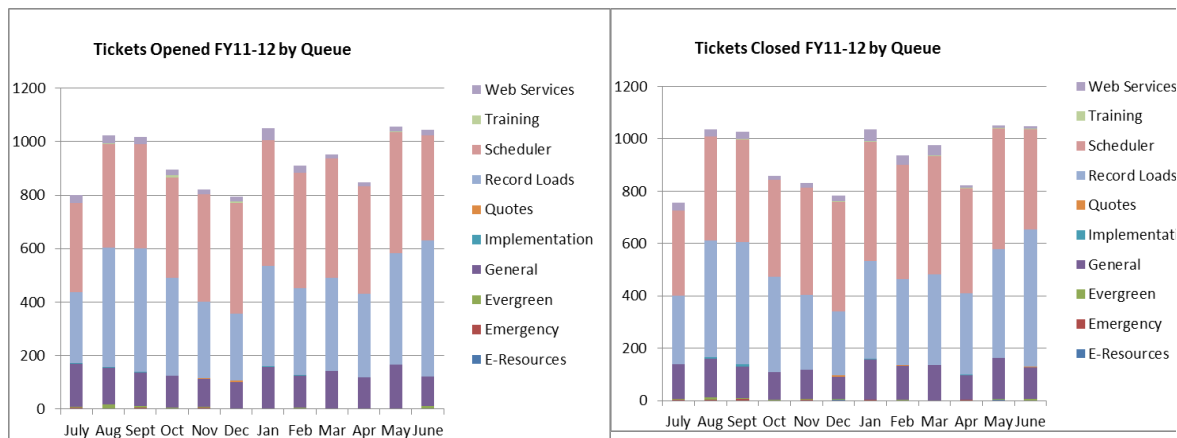
## Annual Report

### Ticket Breakdown by Queue

	Emergency	General	Implementation	Quotes	Record Load	Scheduler	E-Resources	Training	Web Services
Open	17	1557	14	8	4359	4899	8	22	286
Closed	17	1493	21	14	4363	4897	9	18	291

### Ticket Breakdown by Month

	July	Aug	Sep	Oct	Nov	Dec	Jan	Feb	Mar	Apr	May	June
Open	801	1024	1018	896	822	793	1051	911	953	849	1055	1044
Closed	757	1036	1028	859	832	780	1035	936	977	821	1052	1049



# MOBIUS

## Annual Report

### Ticket Breakdown by Institution

Institution	Opened	Closed
A.T. Still University	27	22
Assemblies of God Theological Seminary	3	2
Avila University	51	51
Baptist Bible College	46	43
Camden County Library	1	1
Central Methodist University	16	16
Christian County Library	5	5
Columbia College	315	317
Conception Abbey & Seminary College	16	14
Cottey College	68	64
Covenant Theological Seminary	44	44
Crowder College	33	31
Culver-Stockton College	22	19
Drury University	116	113
East Central College	118	118
Fontbonne University	243	244
Forest Institute of Professional Psychology	172	168
Hannibal-LaGrange University	179	177
Harris-Stowe State University	6	8
Jefferson College	127	128
Kansas City Art Institute	112	113
Kenrick-Glennon Seminary	3	4
Lincoln University	27	30
Lindenwood University	567	567
Linn State Technical College	56	56
Logan College of Chiropractic	84	83
Maryville University	23	26
Metropolitan Community Colleges	41	43
Midwestern Baptist Theological Seminary	49	50
Mineral Area College	105	105
Missouri Baptist University	112	113
Missouri River Regional Library	1	1

# MOBIUS

## Annual Report

### Ticket Breakdown by Institution (cont.)

Missouri Southern State University	343	345
Missouri State Library	25	23
Missouri State University	749	746
Missouri University of Science & Technology	605	603
Missouri Valley College	11	10
Missouri Western State University	289	293
Moberly Area Community College	39	45
North Central Missouri College	62	63
Northwest Missouri State University	338	340
Ozarks Technical Community College	102	103
Poplar Bluff Library	47	41
Rockhurst University	92	94
Saint Louis University	14	13
Saint Paul School of Theology	21	21
Southeast Missouri State University	340	339
Southwest Baptist University	162	156
Springfield-Greene County Library	32	31
St Charles Community College	52	53
St Louis College of Pharmacy	21	23
St Louis Community College	100	90
State Fair Community College	20	19
Stephens College	55	55
Three Rivers Community College	147	148
Truman State University	110	110
University of Central Missouri	76	70
University of Missouri - Columbia	619	618
University of Missouri - Kansas City	622	630
University of Missouri - St Louis	572	569
Washington University	36	35
Webster University/Eden Theological Seminary	115	116
Westminster College	8	7
William Jewell College	73	73
William Woods University	29	31

# MOBIUS

## Annual Report

### BOARD OF DIRECTORS

Gail Staines, President  
 Shirley Baker, Past President  
 Valerie Darst, Vice-President  
 Cynthia Dudenhoffer, Secretary  
 Corrie Hutchinson, Treasurer  
 Jim Cogswell, Member At-Large  
 Stephanie DeClue, Member At-Large  
 Kathy Schlump, Member At-Large  
 Sharon Upchurch, Member At-Large  
 Regina Cooper, Public Library Representative  
 Chabha Tepe, Academic Library Representative  
 Susan Morrisroe, Special Library Representative  
 Margaret Conroy, State Librarian (Ex-officio)

### Financial Statement

	FY 2009-2010	FY 2010-2011	FY 2011-2012
Revenues	\$3,999,178	\$4,745,773	\$5,274,527
Expenses	\$3,969,934	\$4,405,347	\$4,966,345

### Borrowing

	FY 2009-2010	FY 2010-2011	FY 2011-2012
Intra-Cluster Borrowing	70,720	71,705	59,292
MOBIUS Borrowing	146,972	149,621	134,148
Total Borrowing	217,692	221,326	193,440

### Unique Holdings

Titles held by 1 library	6,368,353
Titles held by 2 or more libraries	3,027,190
Total	9,395,543
% of Unique Holdings	67.78%

### Help Desk

	FY 2009-2010	FY 2010-2011	FY 2011-2012
Tickets Opened	1,700	1,946	1,959
Tickets Closed	1,691	1,911	1,902